



Biosphere—Butterfly Handout

14908 Tilden Road—Winter Garden FL 34787

(407) 656-8277

www.BiosphereNursery.com

Many of our native plant species are in decline because of a decline in insect pollinators, resulting in low seed production. Many crops also produce lower yields due to low pollinator populations. Man has declared war on insects with massive spray programs, killing the good with the bad and removing an important link in most food chains. You can help by planning a Bioscape that attracts and increases populations of butterflies and other pollinators. Let us help you plan a landscape that enhances habitats for all native wildlife.

I. Recommended Nectar Food Plants

- Agastache (*Agastache spp.*)
- African Blue Basil (*Ocimum spp.*)
- Asters (*Symphotrichum spp.*) (N)
- Beardtongue (*Penstemon multiflorus*) (N)
- Beebalm (*Monarda spp.*)
- Black-eyed Susan (*Rudbeckia hirta*) (N)
- Blanketflower (*Gaillardia aristata*)
- Blazing Stars (*Liatris spp.*) (N)
- Blue Curls (*Trichostema dichotomum*) (N)
- Blue Potato Bush (*Solanum rantonettii*)
- Bulbine (*Bulbine frutescens*)
- Buttonbush (*Cephalanthus occidentalis*)
- Butterfly Bush (*Buddleja spp.*)
- Butterflyflower (*Clerodendrum ugandense*)
- Calamint (*Calamintha ashei x georgiana*) (N)
- Candy Corn Lobelia (*Lobelia laxiflora*)
- Cape Honeysuckle (*Tecomaria capensis*)
- Cardinalflower (*Lobelia cardinalis*) (N)
- Cardinals Guard (*Pachystachys coccinea*)
- Cat's Whiskers (*Orthosiphon aristatus*)
- Cleome (*Cleome hassleriana*)
- Coral Honeysuckle (*Lonicera sempervirens*) (N)
- Coreopsis (*Coreopsis spp.*) (N)
- Cornflower (*Centaurea cyanus*)
- Cosmos (*Cosmos spp.*)
- Columbine (*Aquilegia canadensis*) (N)
- Crocosmia (*Crocosmia sp.*)
- Cuban Buttercup (*Turnera ulmifolia*)
- Cupheas (*Cuphea spp.*)
- Dune Sunflower (*Helianthus debilis*) (N)
- Duranta (*Duranta erecta*)
- Firecracker Vine (*Manettia luteorubra*)
- Firebush (*Hamelia patens*) (N)
- Firespike (*Odontonema spp.*)
- Gaura (*Gaura lindheimeri*)
- Giant Yellow Shrimp (*Barleria micans*)
- Gloriosa Daisy (*Rudbeckia gloriosa*)
- Gloxinia, Bolivian Sunset (*Gloxinia sylvatica*)
- Goldenrods (*Solidago spp.*) (N)
- Greeneyes (*Berlandiera subacaulis*) (N)
- Hibiscus (*Hibiscus rosa-sinensis*)
- Indian Blanket (*Gaillardia pulchella*) (N)
- Iochroma (*Iochroma cyaneum*)
- Ironweed (*Vernonia spp.*) (N)
- Jamaican Capertree (*Capparis cynophallophora*) (N)
- Jatropha (*Jatropha integerrima*)
- Lantanas (*Lantana spp.*)
- Lion's Mane (*Leonotis spp.*)
- Mandarin Hat (*Holmskioldia sanguinea*)
- Mexican Flame Vine (*Senecio confusus*)
- Mexican Sunflower (*Tithonia rotundifolia*)
- Mexican Tarragon (*Tagetes lucida*)
- Milkweeds (*Asclepias spp.*)
- Mona Lavender (*Plectranthus 'Mona Lavender'*)
- Oak Leaf Hydrangea (*Hydrangea quercifolia*) (N)
- Paintbrush (*Carphephorus paniculatus*) (N)
- Panama Rose (*Rondeletia leucophylla*)
- Pennyroyal (*Piloblephis rigida*) (N)
- Petunia, Native (*Ruellia caroliniensis*) (N)
- Pineland Heliotrope (*Heliotropium polyphyllum*) (N)
- Porterweeds (*Stachytarpheta spp.*)
- Powderpuffs (*Calliandra spp.*)
- Purple Coneflower (*Echinacea purpurea*) (N)
- Queens Wreath Vine (*Petrea volubilis*)
- Redroot (*Lachnanthes carolina*) (N)
- Rosinweed (*Silphium compositum*) (N)
- Rough Sunflower (*Helianthus angustifolius*) (N)
- Russelias (*Russelia spp.*)
- Sage Rose (*Tunera subulata*)
- Salvias (*Salvia spp.*)
- Scorpion Tail (*Heliotropium angiospermum*) (N)
- Sea Ox Eye Daisy (*Borrchia frutescens*) (N)
- Sensitive Mimosa (*Mimosa strigillosa*) (N)
- Shrimp Plants (*Justicia spp.*)
- Snowbells (*Styrax americanus*) (N)
- Snow Square Stem (*Melanthera nivea*) (N)
- Spinach Tree (*Cnidioscolus aconitifolius*)
- Standing Cypress (*Ipomopsis rubra*) (N)
- Stoke's Aster (*Stokesia loevis*) (N)
- Tall Red Pentas (*Pentas lanceolata*)
- Thryallis (*Galphimia gracilis*)
- Verbenas (*Verbena spp.*)
- Virginia Willow (*Itea virginica*) (N)
- Walter's Viburnum (*Viburnum obovatum*) (N)
- Yarrow (*Achillea millefolium*)
- Yellow Bells (*Tecoma stans*)
- Yellow Cestrum (*Cestrum aurantiacum*)
- Yesterday, Today & Tomorrow (*Brunfelsia spp.*)

II. Larval Food Source (Host Plants)

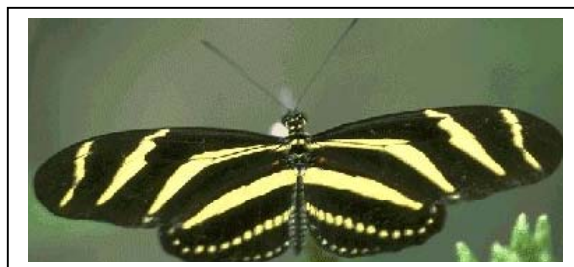
Water Hemlock (N) (*Cicuta maculata*) Black Swallowtail
Parsley (*Petroselinum spp.*) Black Swallowtail
Fennel (*Foeniculum spp.*) Black Swallowtail
Dill (*Anethum graveolens*) Black Swallowtail
Rue (*Ruta graveolens*) Giant Swallowtail/Black Swallowtail
Wild Lime (N) (*Zanthoxylum fagara*) Giant Swallowtail
Hercules Club (N) (*Zanthoxylum clava-herculis*) Giant Swallowtail
Sweetbay (N) (*Magnolia virginica*) Eastern Tiger Swallowtail
Paw Paw (N) (*Asimina spp.*) Zebra Swallowtail
Pipevine (*Aristolochia spp.*) Gold Rim Swallowtail (some attract Pipevine Swallowtails)
Red Bay (N) (*Persea borbonia*) Palamedes Swallowtail/Spicebush Swallowtail
Swamp Bay (N) (*Persea palustris*) Palamedes Swallowtail/Spicebush Swallowtail
Silk Bay (N) (*Persea humilis*) Palamedes Swallowtail/Spicebush Swallowtail
Spicebush (N) (*Lindera benzoin*) Spicebush Swallowtail
Ash (N) (*Fraxinus spp.*) Eastern Tiger Swallowtail
Lemon Bacopa (N) (*Bacopa caroliniana*) White Peacock
Water Hyssop (N) (*Bacopa monnieri*) White Peacock
Frog Fruit (N) (*Phyla nodiflora*) White Peacock/ Phaon Crescent/Buckeye
Carolina Willow (N) (*Salix caroliniana*) Viceroy
Milkweed (*Asclepias spp.*) Monarch/Queen
Giant Milkweed (*Calotropis procera*) Monarch/Queen
Climbing Aster (N) (*Symphotrichum carolinianus*) Pearl Crescent
Bushy Aster (N) (*Symphotrichum dumosus*) Pearl Crescent
Native Petunia (N) (*Ruellia caroliniana*) Buckeye
Snapdragon (*Antirrhinum spp.*) Buckeye
False Nettle (N) (*Boehmeria cylindrica*) Red Admiral
Arugula (*Eruca sativa*) Great Southern White
Oaks (N) (*Quercus spp.*) Horace's Duskywing
Swamp Dogwood (N) (*Cornus foemina*) Spring Azure
Wax Myrtle (N) (*Myrica cerifera*) Red Banded Hairstreak
Tapioca Tree (*Manihot esculenta*) Red Banded Hairstreak
Pignut Hickory (N) (*Carya glabra*) Banded Hairstreak
Canna (N) (*Canna flaccida*) Canna Skipper
Thalia (N) (*Thalia geniculata*) Canna Skipper
Fountain Grass (*Pennisetum setaceum*) Clouded Skipper
Yucca (N) (*Yucca filamentosa*) Yucca Giant Skipper/Cofaqui Giant Skipper
Bastard Indigo (N) (*Amorpha fruticosa*) Silver Spotted Skipper/Southern Dogface
Saw Palmetto (N) (*Serenoa repens*) Monk Skipper/Palm Skipper
Fakahatchee Grass (N) (*Tripsacum dactyloides*) Clouded Skipper/Bysscus Skipper
Butterfly Pea (*Clitoria ternatea*) Long Tailed Skipper/Cloudy Wing
Maidencane (N) (*Panicum hemitomom*) Clouded Skipper/Delaware Skipper/Aaron's Skipper
Deerberry (N) (*Vaccinium stamineum*) Red Spotted Purple
Elms (N) (*Ulmus spp.*) Question Mark/Eastern Comma
Hackberry (N) (*Celtis laevigata*) Hackberry/Tawny Emperor/Question Mark/American Snout
Perennial Peanut (*Arachis glabrata*) Barred Yellow
Yellow Cassia (*Senna bicapsularis*) Cloudless Sulphur/Orange Barred Sulphur/Sleepy Orange
Privet Cassia (N) (*Senna ligustrina*) Cloudless Sulphur/Orange Barred Sulphur
Summer Cassia (*Senna corymbosa*) Cloudless Sulphur/Orange Barred Sulphur
Popcorn Cassia (*Senna didymobotrya*) Cloudless Sulphur/Orange Barred Sulphur
Partridge Pea (N) (*Chamaecrista fasciculata*) Cloudless Sulphur/Ceraunus Blue/Gray Hairstreak/Little Yellow
Sensitive Mimosa (*Mimosa strigillosa*) Little Yellow
Hawthorn (*Crataegus spp.*) Striped Hairstreak
Southern Red Cedar (*Juniperus virginiana*) Juniper Hairstreak
Dahoon Holly (*Ilex cassine*) Henry's Elfin
Passionvine (except *coccinea*) (*Passiflora spp.*) Zebra Longwing/Gulf Fritillary
Passionvine, Maypop (N) (*Passiflora incarnata*) Variegated Fritillary



Monarch on Milkweed



Silver Spotted Skipper



Black Swallowtail



Red Banded Hairstreak



Gulf Fritillary